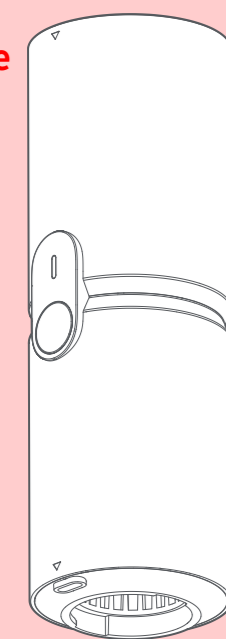


HOTO Compressed Air Capsule

小猴吹吸一体机



Make It Happen



扫码关注公众号
即可一分钱享质保
Stay tuned to our social media
@hoto_official

01 Safety Instructions

Warning!

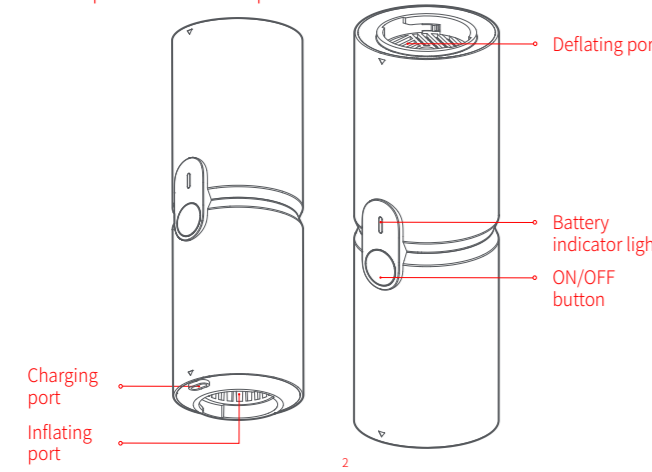
Please read all safety warnings, instructions, illustrations, and rules provided along with the product and keep all warnings and instructions for reference.

Read this manual carefully before use, and retain it for future reference. This product will make noise around 75dB when working. Please be careful. This product is not a toy, and children are forbidden to use it. Do not vacuum cleaning without attaching dust cup.

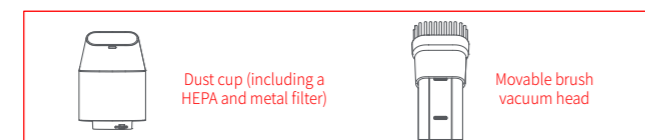
This product is very powerful, please keep distance with your hair while using.

02 Product Overview

HOTO Compressed Air Capsule enables vacuum cleaning, inflating, dust blowing and vacuum deflating after the accessories are installed. For details, please visit the sales page or contact Hoto customer service. The images shown are for illustration purposes only and may not be an exact representation of the product.



Vacuum cleaning accessories



Inflating/deflate valve



Vacuumping connector



03 How to Use

Battery indicator and charging

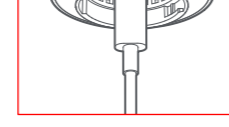
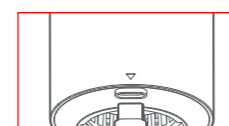
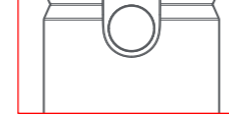
Battery indicator
When the product is working, its battery indicator light is on.

When the power is $\geq 20\%$, the white indicator light always stays on.
When the power is $< 20\%$, the red indicator light always stays on, indicating that the product needs charging.

Charging
Please fully charge the product before using it for the first time. Please charge the product using an adapter that matches the product's charging power through a charging cable.

Charging status:
When the product is being charged, the red light presents a breathing lighting style.
When it is 100% charged, the white light always stays on.

Suggestions:
The product cannot be used when it is being charged. Please buy a safe and compliant 5V USB adapter.



Turn-on/Turn-off/Gear switch

Turn-on

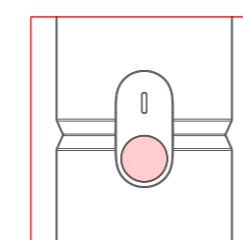
Press and hold the ON/OFF button for 1.5 seconds to turn on the machine and make it work.

Turn-off

When the machine is working, press and hold the ON/OFF button for 1.5 seconds to make it stop working and turn it off.

Gear switch

The machine will run in high gear by default after being turned on. You can press the ON/OFF button to switch to low gear and then press the button to switch to high gear.

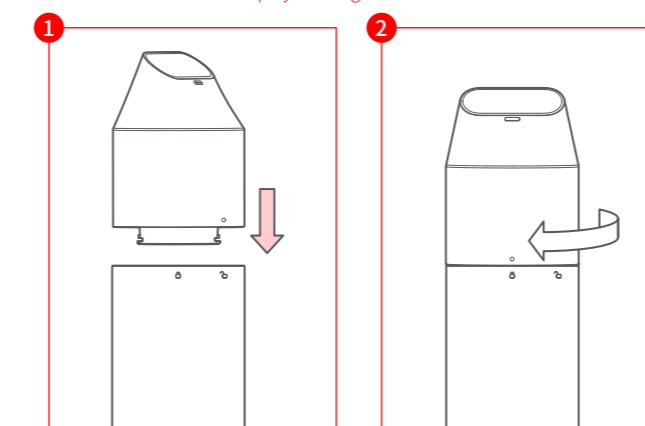


Installation and cleaning of the vacuum cleaning accessories

Installation of the dust cup

Please align the dot marking on the dust cup with the unlocking marking on the machine body, insert the dust cup, and rotate it clockwise to tighten it up. When the dust cup is installed, the dot marking on the dust cup will be aligned with the locking marking on the machine body.

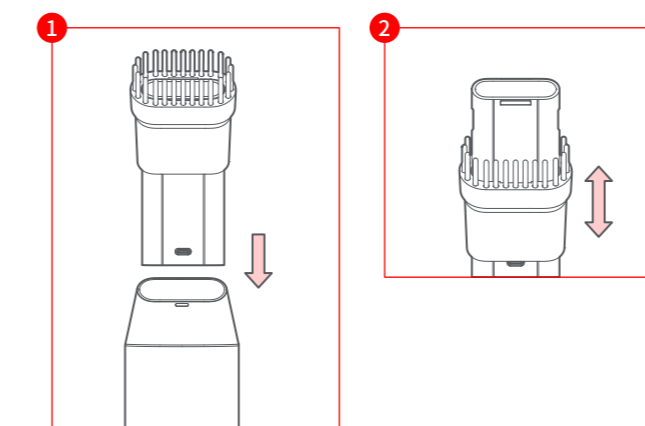
You can remove the dust cup by rotating it counterclockwise.



Installation of the movable brush vacuum head

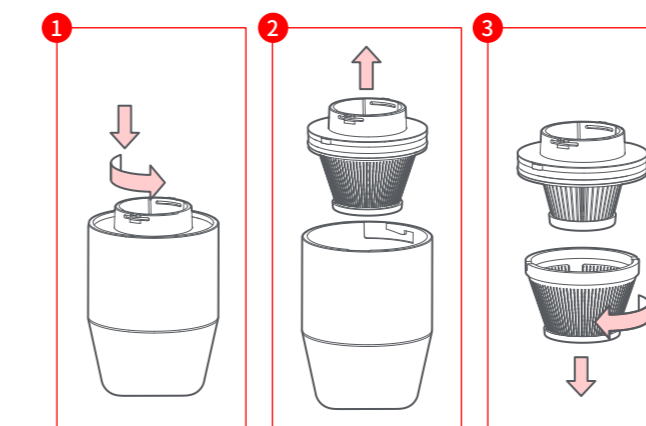
After the dust cup is installed, insert the movable brush vacuum head into the dust cup according to the arrow as illustrated. When it is fully inserted, there will be an obvious gear sense, indicating that the vacuum head is fully installed. The brush component is movable. It can be pulled and pushed back and forth.

Hold and pull the integrated short brush vacuum head to remove it.



Removal and installation of the HEPA in the dust cup

1. Press the dust cup lid and then rotate to screw it out.
2. Take out the internal filter and remove the dust in the dust cup.
3. If you want to change the HEPA for a new one, please rotate the metal gauze on the filter to remove it and then rotate and install the new HEPA and metal gauze.

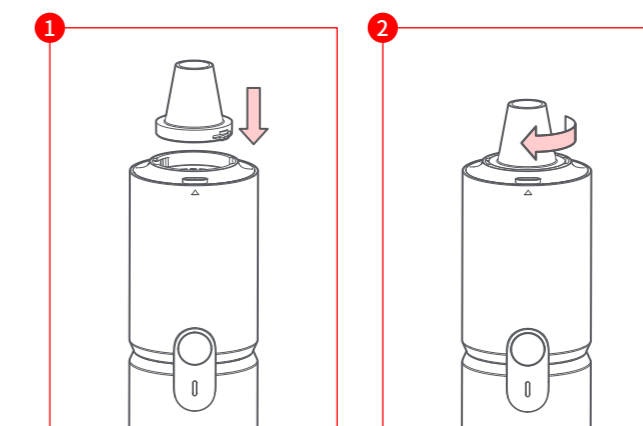


Installation of the air valve and connector

Installation of the air valve

Please align the bump on the air valve with the groove on the inflating/suction port, insert the air valve, and rotate the air valve clockwise to tighten it up. When the air valve is fully installed, there will be an obvious gear sense.

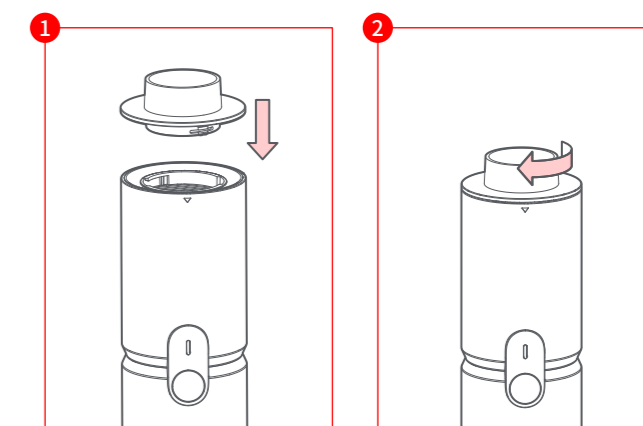
You can rotate the air valve counterclockwise to remove it.



Installation of the suction connector

Please align the bump on the connector with the groove on the suction port, insert the connector, and rotate it clockwise to tighten it up. When the connector is fully installed, there will be an obvious gear sense.

You can remove the connector by rotating it counterclockwise.



Attention

Please use the product with caution when the pressure allowed by the balloon is smaller than the max inflating pressure of the product. Please do not use accessories other than the components of the dust cup for vacuum cleaning, as the intrusion of fine dust may damage the product.

04 Precautions

- This product is not a toy, and children are forbidden to use it. The minimum recommended age for users is 16 years old. During working, please keep children at a safe distance from the product.
- The built-in lithium battery of the product cannot be disassembled. Do not throw the product into the fire or discard it at will. Overheating and hitting of the lithium battery and water damage to it may cause fire, autoignition, and explosion. Please do not place the product in hot environments such as vehicles for long.
- Do not keep the product at a temperature below -10°C or above 45°C , because overcooling or overheating will shorten the product's life of service and damage the built-in battery.
- If the product is left idle for long, its battery may be damaged. Please charge the product at least every three months.
- The product is equipped with a built-in direct current machine. Please do not use it in flammable and explosive environments.

- Please turn off the machine immediately if it makes a strange voice or overheats when working.
- Please do not leave during the inflating. Observe the inflating process to prevent the inflating pressure from being too high.
- Please use the product in a dry and clean environment, as the product is not waterproof. Do not rinse the product.
- Please use a safe and compliant adapter in combination with a compliant charging cable, to charge the product. Faults caused by a failure to charge as stipulated above will not be covered by the warranty.

05 Battery

- Please do not place the battery in extremely hot environments, such as sunshine, fire, microwave oven, and oven. Otherwise, explosions or flammable liquid and gas leakages may be caused.
- Please do not disassemble, hit, crush, or cut the battery. Otherwise, explosions may be caused.
- Please do not place the battery under extremely low air pressure. Otherwise, the battery may explode, or the flammable liquid and gas may leak.
- Please do not use the product if its battery is severely swollen.

06 Troubleshooting

Issues	Solutions
Fail to turn this product on	Turn on the machine after charging for a while
Slow inflating	<ol style="list-style-type: none"> Check whether the power is sufficient. Check whether accessories are fully installed. Check whether the air outlet is fully connected to the air valve of the inflated object. Check whether the inflated object is subject to any air leakage.
Already turned on but unable to work	<ol style="list-style-type: none"> Check whether the power is sufficient. Check whether the ambient temperature is beyond the requested range.
Air leaks after the air valve is connected	<ol style="list-style-type: none"> Check whether the air valve is fully installed. Check whether the air valve is damaged or cracked.

07 Specifications

Name: HOTO Compressed Air Capsule
Model: QWCXJ001
Item Dimensions:
Approx. 55 × 56 × 163.5mm (bare machine, without accessories)
Net Weight: Approx. 356g
Color: Black
Max Suction: 15000 Pa
Storage Temperature: -10°C ~ 45°C
Battery Type: Lithium-ion battery
Battery Capacity: 1900mAh
Operating Noise: Around 75dB
Rated Input: 5V \approx 3A
Rated Power: 120W
Rated Voltage: 10.8V
Charging Port: USB Type-C
Charging Time: Approx. 2.5 hours

08 Regulatory Compliance Information

Europe — EU declaration of conformity

We, Shanghai HOTO Technology Co., Ltd., hereby, declare that this equipment is in compliance with the applicable Directives and European Norms, and amendments.

Disposal and recycling information

All products bearing this symbol are waste electrical and electronic equipment (WEEE as in directive 2012/19/EU) which should not be mixed with unsorted household waste. Instead, you should protect human health and the environment by handing over your waste equipment to a designated collection point for the recycling of waste electrical and electronic equipment, appointed by the government or local authorities. Correct disposal and recycling will help prevent potential negative consequences to the environment and human health. Please contact the installer or local authorities for more information about the location as well as terms and conditions of such collection points.

Federal Communications Commission Supplier's Declaration of Conformity

This supplier's declaration of conformity is hereby for

Product: HOTO Air Compressed Machine
Model Number(s): QWCXJ001
Brand/Trade: HOTO

This device complies with part 15 of the FCC Rules. Operation is subject to the following two conditions: (1) This device may not cause harmful interference, and (2) this device must accept any interference received, including interference that may cause undesired operation.

Note: This equipment has been tested and found to comply with the limits for a Class B digital device, pursuant to part 15 of the FCC Rules. These limits are designed to provide reasonable protection against harmful interference in a residential installation. This equipment generates, uses and can radiate radio frequency energy and, if not installed and used in accordance with the instructions, may cause harmful interference to radio communications. However, there is no guarantee that interference will not occur in a particular installation. If this equipment does cause harmful interference to radio or television reception, which can be determined by turning the equipment off and on, the user is encouraged to try to correct the interference by one or more of the following measures:

- Reorient or relocate the receiving antenna.
- Increase the separation between the equipment and receiver.
- Connect the equipment into an outlet on a circuit different from that to which the receiver is connected.
- Consult the dealer or an experienced radio/TV technician for help.

Representative of Responsible Party for SDoC
Company: Shanghai HOTO Technology Co., Ltd.
Address: Building 45, No.50 Moganshan Road, Shanghai, China
Country: China
Telephone No.: 400-021-8696

Manufacturer: Shanghai HOTO Technology Co., Ltd.
Address: Building 45, No.50 Moganshan Road, Shanghai, China

DECLARATION OF CONFORMITY



EU Declaration of Conformity

We

Shanghai HOTO Technology Co., Ltd.

Declare that the product:

HOTO Compressed Air Capsule / QWCXJ001

Complies with the essential health and safety requirements of the following directives:

2014/30/EU Electromagnetic Compatibility directive

References to the following harmonized standard were made:

EN55014-1:2021

EN55014-2:2021

EN IEC 61000-3-2:2019+A1:2021

EN 61000-3-3:2013+A2:2021

2011/65/EU+ (EU) 2015/863 Restrictions of the Use of Certain Hazardous Substances in Electrical and Electronic Equipment

Authorised signatory and technical file holder:

Shanghai HOTO Technology Co., Ltd.
Building 45, No.50 Moganshan Road Shanghai, China.